



Capacity for Rail

FINAL CONFERENCE

Madrid, 21st – 22nd September 2017



C4R Context

- In 2011, the White Paper on European Transport assigned ambitious challenges to the transport system, in terms of development, durability and competitiveness.
- In this context, the railway system has a major role to play in this transport system of tomorrow.
- But, the railway sector has to take a leap forward. Efforts must therefore be focused on increasing the attractiveness of rail system.

How to obtain an affordable, adaptable, automated, resilient and high capacity railway for 2030 and 2050?

C4R- consortium

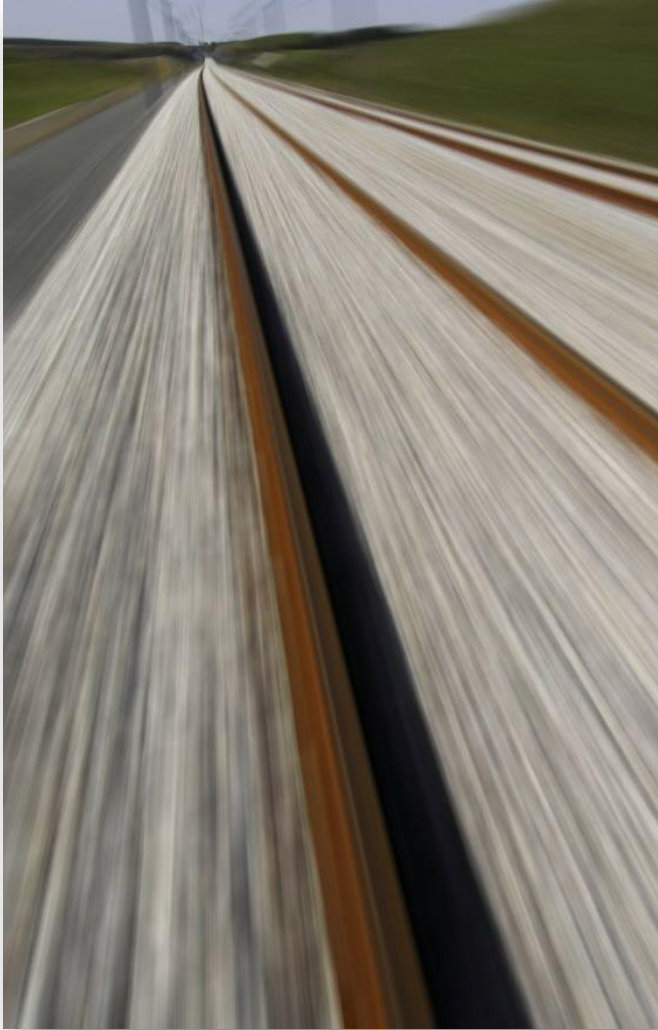




Capacity for Rail

SP1 Infrastructure





To increase **capacity, availability** and **performance** of the railway system through step changes in the infrastructure design, including advanced monitoring.

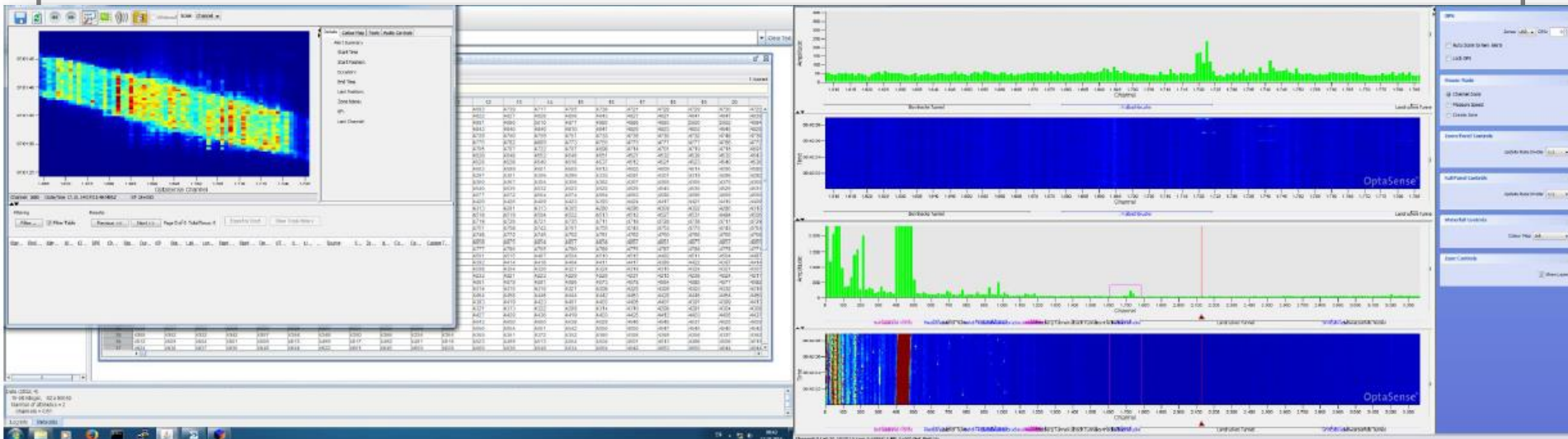


SP4 Advanced monitoring



SP4- Advanced monitoring

To develop new concepts for railway structural and operational monitoring, in order to **enhance the availability** of the track, combined with **automated maintenance forecasts** and a prediction of the structural lifetime.





SP2 New concepts for efficient freight systems



SP2- Freight

To promote the designing of a modern, automated, intelligent, fully integrated system for **efficient, reliable** and **profitable** freight operations.





Capacity for Rail

SP3 Operations for enhanced capacity



SP3- Operations for enhanced capacity

To develop tools and algorithms for supporting decisions during planning and operations of railway networks in order to increase **capacity** while providing **resilience**, **affordability** and **adaptability** by introducing different levels of **automation**.





Capacity for Rail

SP5 System assessment and migration to 2030/2050



Development and assessment of scenarios to **migrate from current to future situation.**

- ✓ Assessing of scenarios and technologies developed under the different SPs
- ✓ Performing demonstrations

■ ■ ■ *Thank you for your kind attention*